

Stair Interpolation™ Plugin

User Manual

PC and Mac

Designed for:

Photoshop Elements 1.0 and 2.0

Photoshop 5.5, 6.0, 7.0 or higher



Intro: From one photographer to another: I have been shooting for the past ten years, and have logged countless hours in front of my computer trying to perfect digital files using Photoshop. Sometimes, I just wouldn't have the right conditions in the field, and rather than re-shoot, I had no choice but to edit the photos --without them looking like they were edited. I decided to develop easy to use Photoshop plugins to make my own workflow run more efficiently. And,

since I use all of these tools on a daily basis with my own work, I thought that other professional and amateur photographer's could benefit from using them as well. These digital darkroom essential tools are based on many years of my personal photography, graphic design and software experience. I see photography as the highest art form, and in my opinion, editing can only enhance your masterpiece, not create it. My goal therefore, is to bring out the best your artwork has to offer. So that you can spend more time out in the field or shooting in the studio, and less time on the computer.

Please feel free to visit fredmiranda.com, an online community for photographers to meet and learn from each other. I look forward to seeing your work!

Introducing the SI Pro 16-bit series Plugin.

Taking image interpolation to the next level

The Stair Interpolation 16-bit* FM Plugin is the result of many months of development and replaces all previous general and custom-made SI actions. With this new essential digital darkroom Photoshop Plugin, photographers will have access to powerful and flexible options for customizing their own image interpolation output. The possibilities are infinite. This new tool has options to choose from any paper size, pixel dimension, printer resolution or even interpolate your images by scale.

The main concept of this professional Plugin is to offer one solution for all digital files. It features built-in English and Metric unit support, therefore encompassing any printing media available.

Fine, Normal and Coarse SI Interpolation intensities as well as optional smart sharpening can also be added to your desired interpolation method.

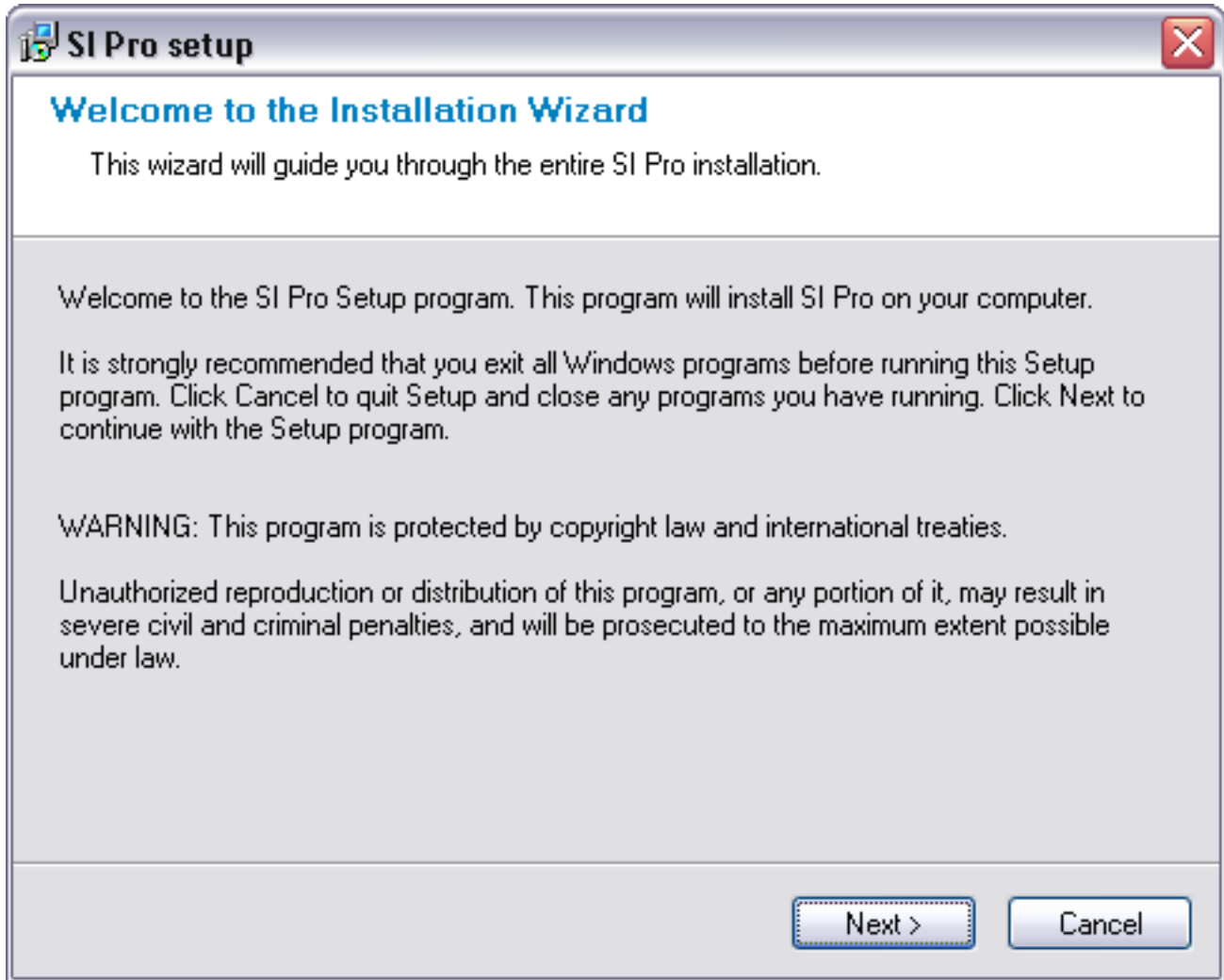
***16-bit color depth available for Photoshop 6.0, 7.0 or higher. Photoshop Elements only supports 8-bit color depth.**



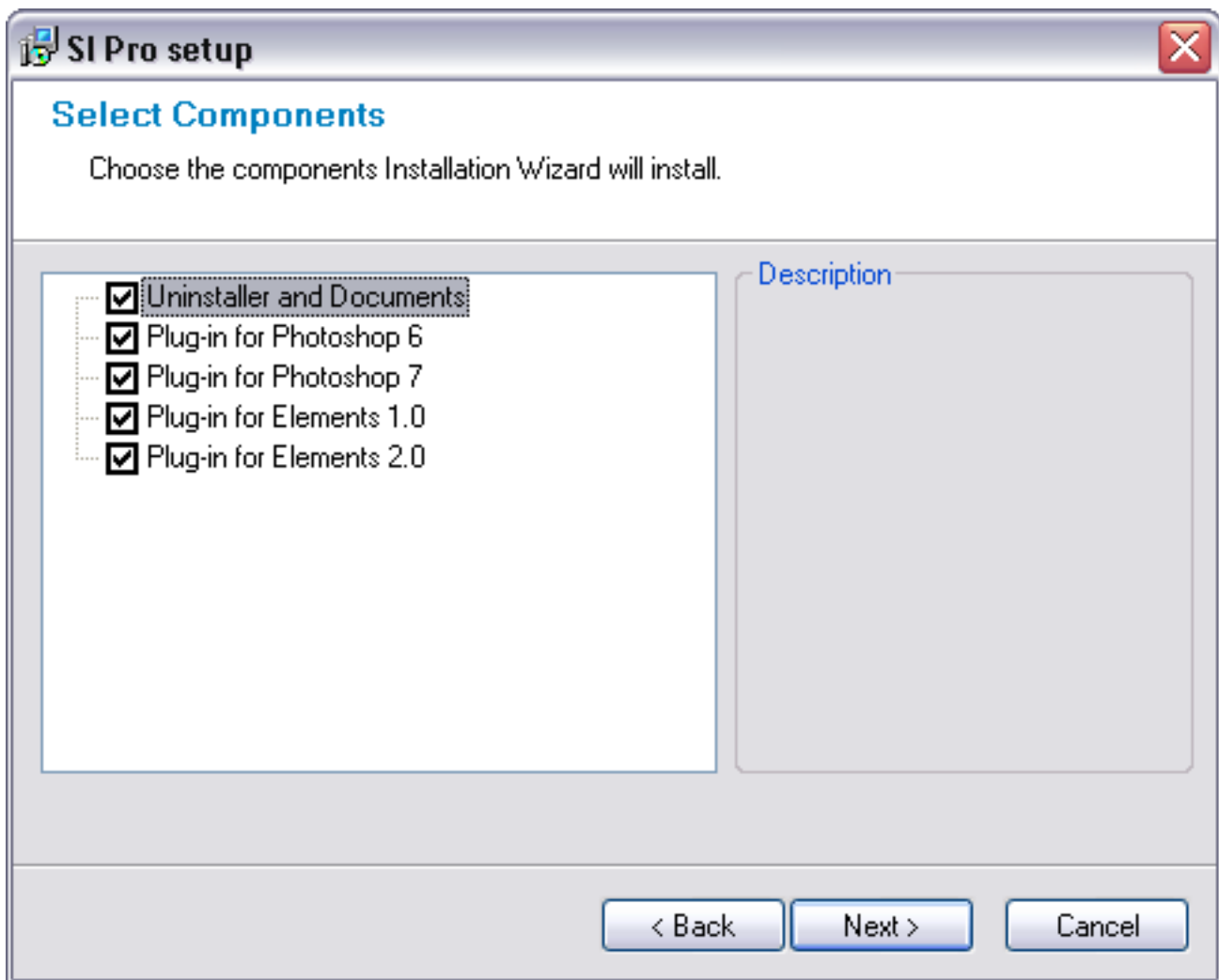
Note: PC version illustrations will be shown throughout this manual. Identical features are available for Mac users. The new interface functionality and concept is based on the feedback from many professional photographers looking for the highest quality print output. The SI Pro plugin is the next generation interpolation tool and it's part of the FM Essential Digital Darkroom plugins.

PC Installation

Unzip the downloaded file "SI_Pro_Installer.zip". There you will find the "SI Pro Installer.exe" - double click on it. This window (below) will pop-up:



After agreeing to the license agreement "EULA", the installer will automatically detect compatible versions of Photoshop installed on your system:



If the installer does not detect your Photoshop version:

The installer will not detect *non-English* Photoshop versions automatically. Therefore, only the “Uninstaller and Documents” option will appear on the “Select Components” window.

Proceed with the installation and make sure that the “Uninstaller and Documents” option is checked. The plugin should be copied to the “Destination Folder” (Which was chosen at the third installer window).

You will need to manually copy the plugin from the “Destination Folder” and paste it in the Photoshop “Automate” folder.

The default location of the “Destination Folder” is: C:\Program Files\FredMiranda

The default Photoshop “Automate” folder path is:

C:\Program Files\Adobe\PhotoshopXX\Plug-Ins\Adobe Photoshop Only\Automate

The default Photoshop Elements “Automate” folder path is:
C:\Program Files\Adobe\Photoshop ElementsXX\Plug-Ins\Automate

* XX = Replace with your Photoshop version

Mac Classic and OS X installation

Drag and drop the included Plug-in file by using the following path:

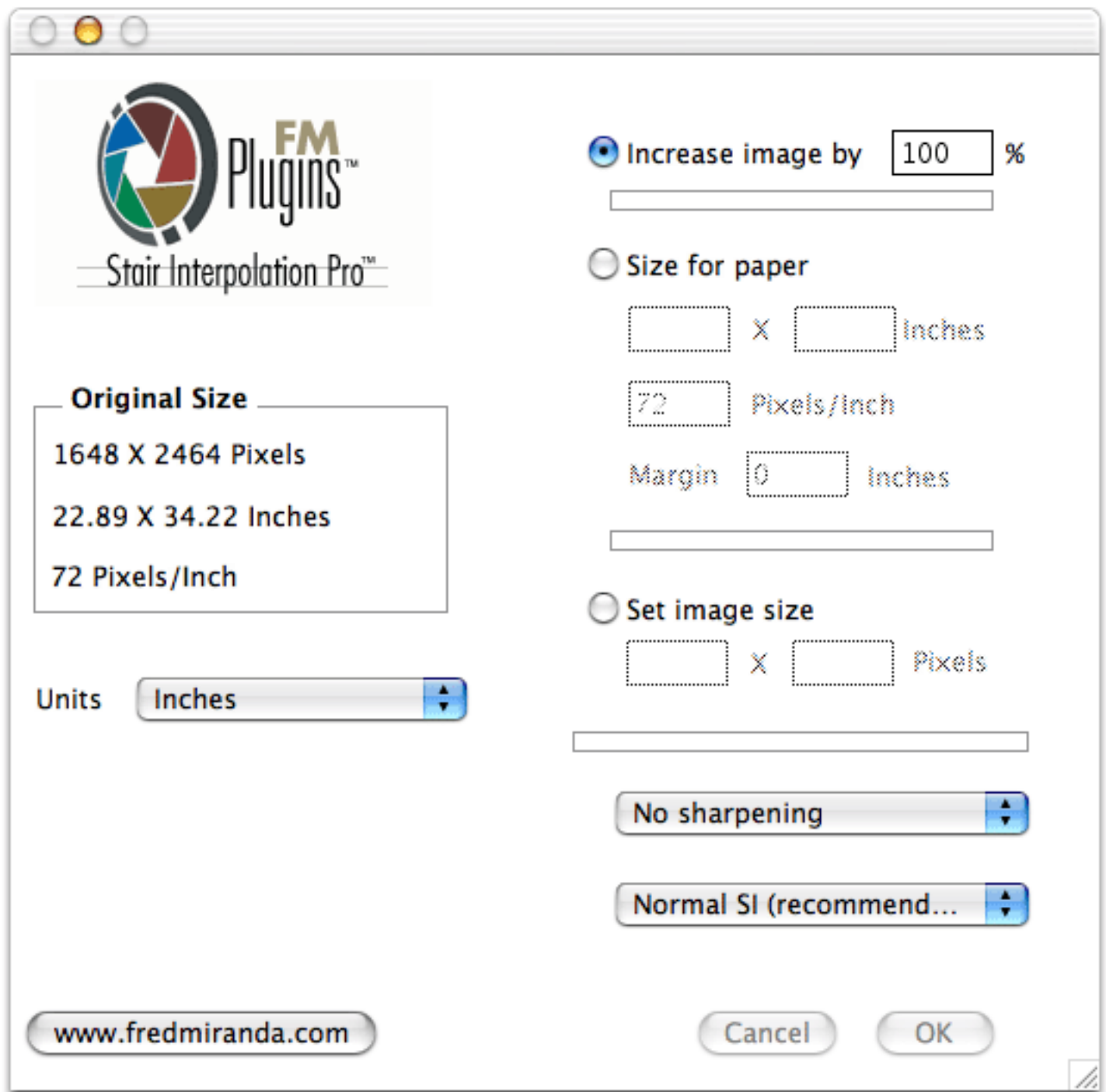
For Photoshop 6.0, 7.0 or higher:

Photoshop X.X > Plug-Ins > Adobe Photoshop Only >Automate

For Photoshop Elements

Photoshop Elements X.X > Plug-Ins > Automate

Below is how the Mac OS X interface looks:

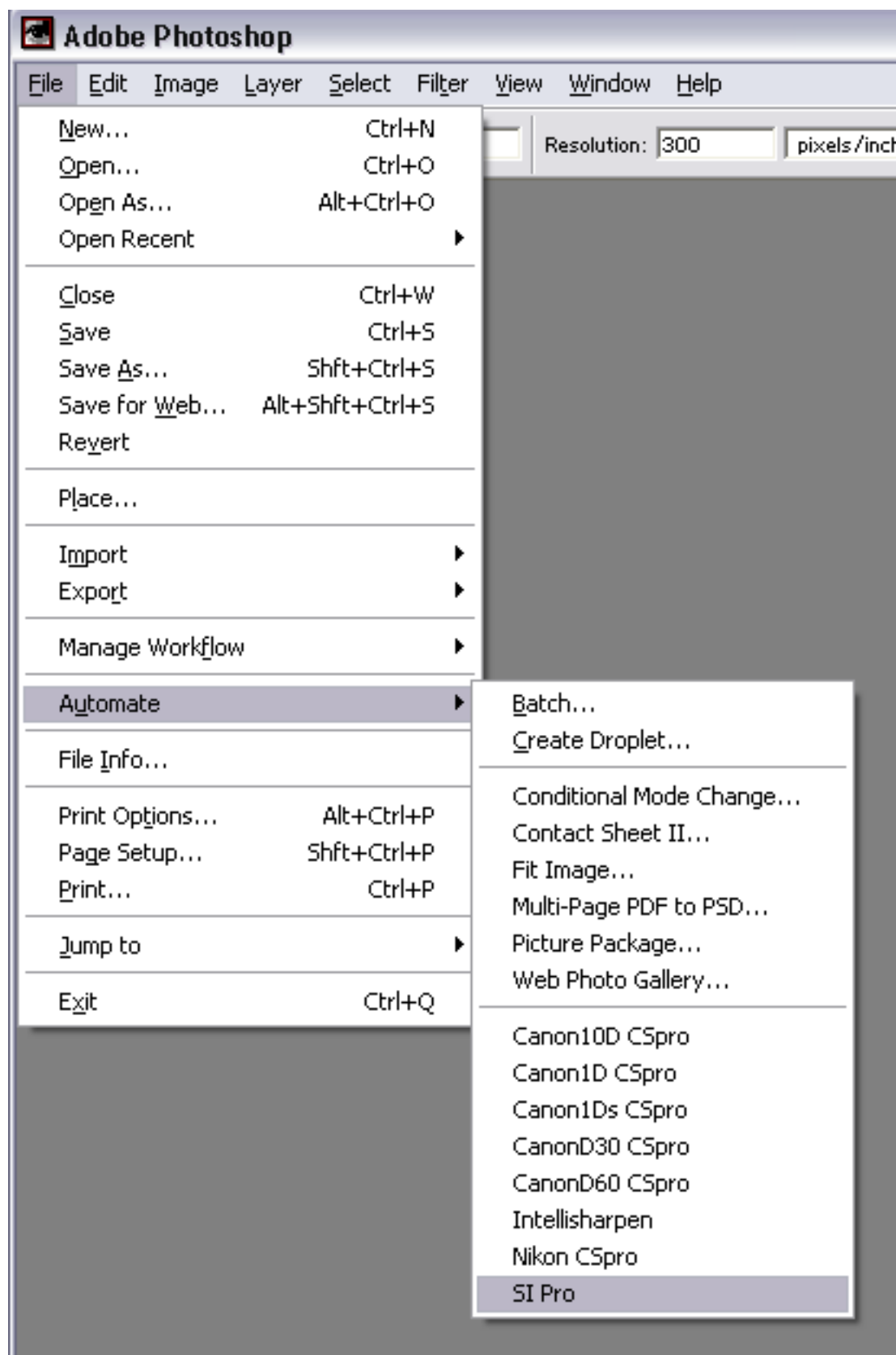


Launching the SI Pro Plugin

If Photoshop was open during the SI Pro Plugin installation, close it.

Re-open Photoshop and open a new Image. You are ready to load the Plugin. Go to: Menu / Automate / SI Pro

See the illustration below:



For those using Photoshop Elements, the plugin location is: File / Automation Tools / SI Pro

When clicking on 'SI Pro', the plugin interface will launch.

SI Pro Plugin settings:

'Original Size' field:

The *Original Size* field shows your original file setting, which is an important reference before running SI Pro.

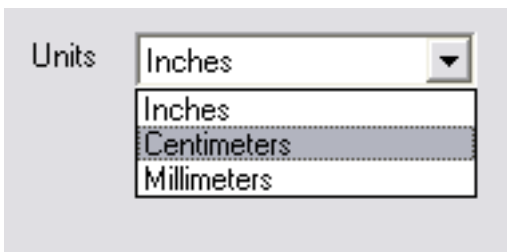
Example:

Pixel Dimensions: 1648 X 2464 Pixels (Original Width X Height)

Document Size: 22.89 X 34.22 Inches (Original Width X Height)

Resolution: 72 Pixels/Inch (PPI)

Units: This drop-down box will let you change the entire SI Unit from English to Metric. All entered settings will be converted automatically.



SI Pro Interpolation methods:

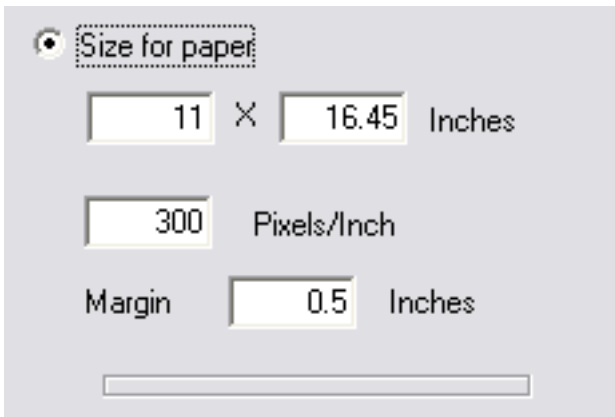
Three (3) powerful and flexible SI interpolation methods are available. Photographers can choose from:

Increase image by Percentage (%)



With this method, photographers may stair interpolate their files based on scale. For example, entering 300% at the Increase image field will provide you 3 times the dimension of your original image file. Therefore, if your original file is: 1648 X 2464 pixels, entering 300% will stair interpolate it to 4944 X 7392 pixels.

Size for paper (Inches, centimeters or millimeters)

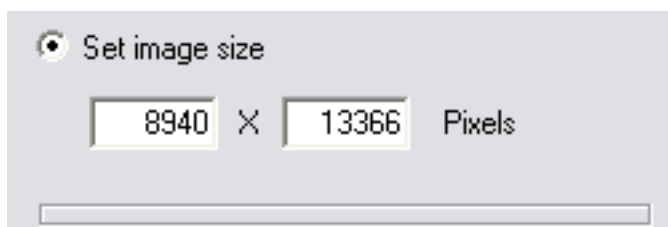


This is the most powerful SI Pro interpolation method offered. You will be able to enter the exact document size for printing output. In this example, with an input of 11 inches width, the image height was automatically calculated based on the image aspect ratio. **Note:** Most digital SLR cameras support the 3:2 aspect ratio. The aspect ratio 4:3 is usually supported by consumer digital cameras.

In the above example, I chose a 3:2 aspect ratio digital file on a 11 X 17 inch media. As you can see, 16.45 inches will be added to the height in order to support this aspect ration. In order to fill out the entire paper, cropping your image before running SI Pro may be needed.

Next, I entered 300 Pixels/Inch (PPI) resolution. This is the output resolution and varies depending on your printing output device. Finally, I added a 0.5 inch margin. (This is a great time saver if you don't have a boderfree printer.)

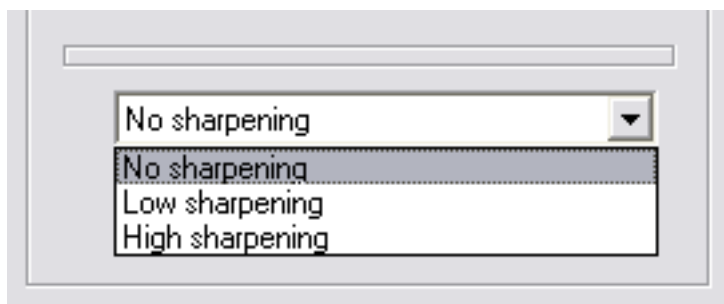
Set image size



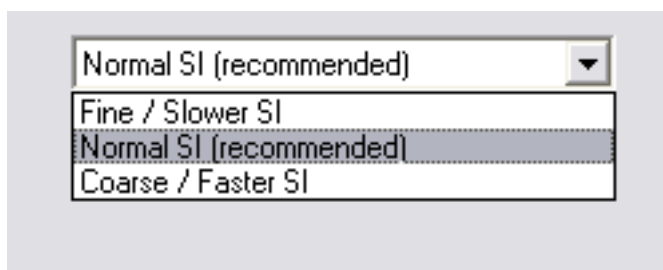
If you already know your desired output dimension size in 'pixels', then method 3, 'Set image size' may be used. In the above example, I added 8640 pixels width. The height of 13366 pixels was added automatically based on the original image aspect ratio.

Intensities and sharpening options (Works with any of the above SI interpolation methods)

The default sharpening setting for SI Pro is 'No sharpening'. However, you can add special formulated sharpening to your images during SI interpolation. Two sharpening options are available: Low and High sharpening.



There are three (3) built-in Stair Interpolation intensity options. The intensity 'Normal SI' is the recommended default setting. It will run faster and provide excellent results. For even finer Interpolation, use the 'Fine' option. SI Interpolation using the Fine option may take a longer time to complete and it's not recommended for slower systems. I also advise **not** using 'Fine SI' with any sharpening option. The Coarse setting will provide the fastest performance and great image quality. (It's a good compromise in regards to speed and image quality.)



Call SI Pro from an action

Optional feature for advanced users

Photoshop Elements not supported

There is a great way to use your SI Pro Plugin faster and easier. All you need to do is create a simple action in Photoshop to open the SI Pro plugin automatically, instead of having to go through using the Automate menu every time.

Here's how to do it:

Go to the Actions palette, click on the new action icon, or you can use the fly out menu (it looks like a little triangle at the top of the palette), and then select new action. You will be prompted by the dialog box to name the action and assign this new action an 'F' key command. Be careful not to use an F key that is already assigned.

After you name the action and set the F key, your next step is to use the 'Insert Menu Item' command in the Actions palette fly-out menu.

After selecting the Insert Menu Item, you will be prompted to select a menu item. To do this, you will need to navigate to the Automate menu and click on 'SI Pro'. Then click 'OK' and stop recording the action.

That's it, you've made your action to call the SI Pro plugin. I'm sure it will be a nice time saving and simple alternative. For more information on creating a simple action, consult your Photoshop manual.

Batching the Plugin

Optional feature for advanced users

Photoshop Elements not supported

Normally, plugins are not compatible with Photoshop's batch mode. However, SI Pro has an internal batch capability that has been added . Here is how to use it:

Open any image in Photoshop. (The only purpose for doing this is to aid the action creation, you may use any file.)

Go to the Actions palette, click on the new action icon, or you can use the fly out menu (it looks like a little triangle at the top of the palette). Then select new action. You will be prompted by the dialog box to name this new action. Provide this action a name, choose a set, and click on 'record'.

Navigate to the Automate menu (File/Automate) and click on 'SI Pro'. Choose your desired SI setting and click on 'Ok'. The setting entered will be recorded into an action.

Your next step is to go back to the Actions palette and stop recording the action. When you need to batch hundred of files using these settings, just call up this action from Photoshop's batch mode. For more information on Photoshop's Batch mode, consult your Photoshop manual.

We highly recommend backing up all FM Plugins to a floppy, CD-R, or Zip drive since, we do not we do not email replacement copies. If your hard drive crashes and you loose your Plugins, you will have to purchase them again. Please backup your plugins on either a floppy or CD. There is no way for us to send lost plugins to everyone who requests them.

Your participation at fredmiranda.com is appreciated!

[FM Forums](#) | [FM Reviews](#) | [FM Gallery Host](#) | [FM Image Upload](#)

All the Best,

[FM Plugins](#)

Your digital darkroom